

# 3<sup>rd</sup> Grade Music

Lesson #2 for week: 3/30/20

Learn at home with

[www.musicplayonline.com](http://www.musicplayonline.com)

Login with your student login: snow

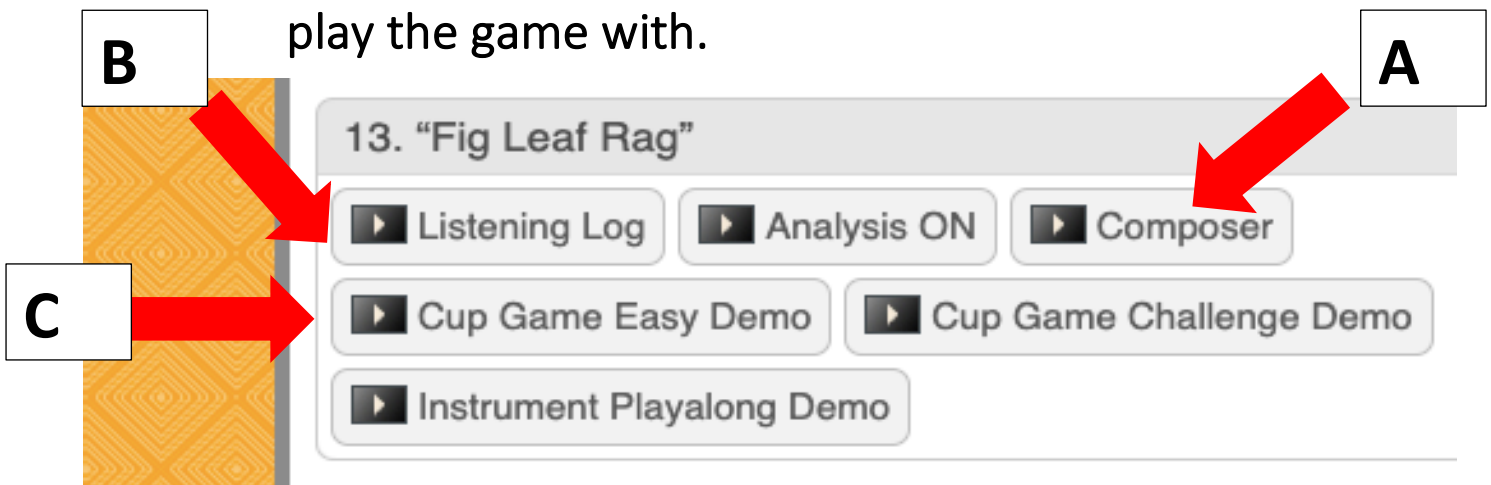
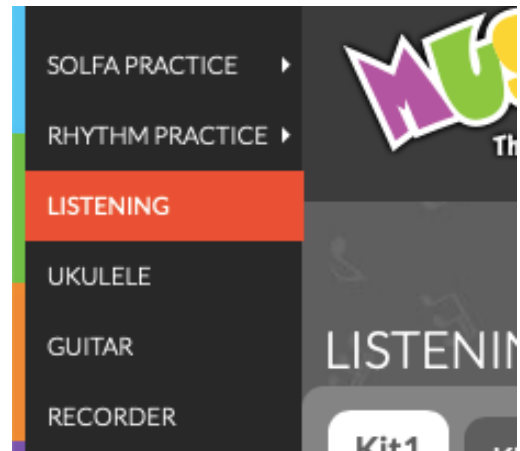
password: 2020

1. On the left side of the page click “Listening” (depending on your browser, this could also be at the very bottom of the screen).

2. In “Kit 2” scroll down to # 13  
“Fig Leaf Rag”

Complete the videos in the following order:

- A. Composer
- B. Listening Log – as you listen see how many of the questions you can answer. Worksheet is shown on the next page and also on the video.
- C. Cup Game Easy Demo – find a cup and see if you can follow along with the game! Find a family member to play the game with.



Name: \_\_\_\_\_

Grade: \_\_\_\_\_

# Listening Kit 2

## Listening Log

Directions: As you listen, think about the music and try to answer as many of the questions as you can. When the selection ends, discuss your answers.

1. What instrument families do you hear? \_\_\_\_\_

Strings



Brass



Woodwind



Percussion



2. What instruments do you hear? \_\_\_\_\_

3. How fast is the music? (tempo) \_\_\_\_\_

slow ..... very fast

*largo*

*andante*

*allegro*

*presto*

4. Is the music quiet or loud? (dynamics) \_\_\_\_\_

very quiet ..... very loud

*pp*

*p*

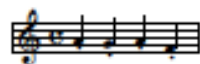
*f*

*ff*

5. Is the music smooth or separated? \_\_\_\_\_



smooth



separated

6. What does this music make you think of? \_\_\_\_\_

7. How does this music make you feel? \_\_\_\_\_

